

MP550 PRINTER

Quick Reference Card



Printer Tech Support 1-866-871-4571
GA-TECHSUPPORT@PANDUIT.COM
Rev. 1 – 11/8/24



414613900

MP550 Printer and Accessories

Part No.	Description
MP550	Includes MP550 printer, 1 cassette of S150X150VAM2, USB cable, Li-Ion Rechargeable battery pack, and power adapter (MP-ACS-2). For use in North America.
MP550/E	Includes MP550-I printer, 1 cassette of S150X150VAM2, USB cable, Li-Ion Rechargeable battery pack, power adapter (MP-ACS-2) and international power cord(s). For use outside of North America.
MP-ACS-2	120-240 VAC universal power adapter module with power cord for North America.
MP-BATT	Replacement Li-Ion Rechargeable battery pack.
MP-REWINDER	Accessory rewinder for easily winding bulk label jobs.

MP550 Label Cassettes

- Die-cut self-laminating labels, Turn-Tell™ labels, flag labels, marker plates, nylon cloth, polyester, electrical component labels, network component labels, raised panel labels, die-cut heat shrink and safety labels.
- Continuous heat-shrink tubing and continuous tapes in various sizes, materials and colors.

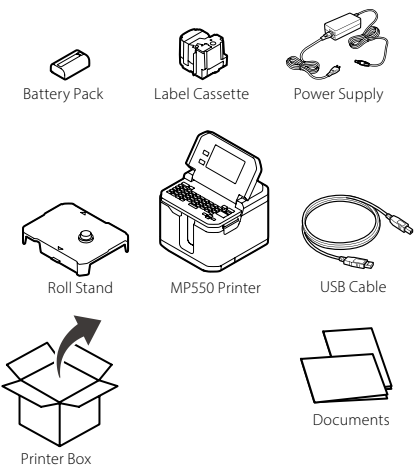
Label Cassette Types

Label Material	Example Part Number	Typical Application
Self-Laminating	S150X150VAM2	Wire/Cable marking
Turn-Tell™	R100X150V1M2	Wire/Cable marking
Heat Shrink	H100X044H1M2	Wire/Cable marking
Marker Plates	M300X050Y6M2	Wire/Cable marking
Flag Labels	F100X150AJM2	Wire/Cable marking
Nylon Cloth	N100X125C1M2	Wire/Cable marking
Nylon Cloth Tape	T100X000C1M-BK	Wire/Cable marking
Adhesive Polyester	C200X100YJM2	General Component Labeling
Polyolefin	C252X030FJM2	Network infrastructure
Polyolefin Tape	T038X000FJM-BK	Terminal blocks
Colored Vinyl Tape Big Roll	T100X000VXMB-BK	Safety/Facility
Safety Label	C190X400A5M2	Safety/Facility
Raised Panel	C100X050APM3	General Component Labeling

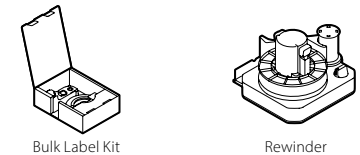
Note: Please check Panduit website for the latest firmware and full list of cassette part numbers.

Getting Started

• Included Items



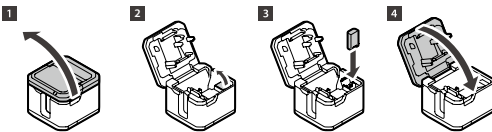
• Other Items Sold Separately:



Printer Setup

Installing Li-Ion Battery Pack

- Open the MP550 top panel.
- Open the Li-Ion battery compartment panel.
- Insert the Li-Ion battery pack.
- Close the MP550 top panel.

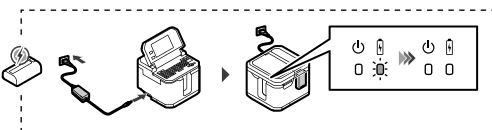


Recharging the Li-Ion Battery Pack

⚠ CAUTION

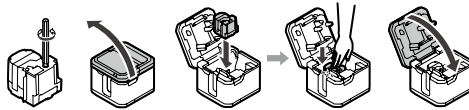
Always use the included AC adapter.

- Connect the included AC adapter to the printer and plug the power plug into a power outlet. Battery icon will blink while charging and turn solid after battery pack is fully charged.



Insert a label cassette into the printer

- Remove any slack in the tape inside the cassette (if needed).
- Open the cassette door/printer cover.
- Place the cassette into the printer as shown and close the lid.



Connecting wirelessly to MP550 printer via Infrastructure mode:

- Push the power button on the MP550.

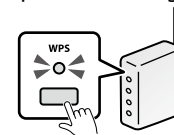


- Push the Wi-Fi icon button on the MP550 LCD touch panel to start the connection process.

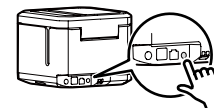


Connecting wirelessly to MP550 printer via Infrastructure mode (Continued):

- Press the WPS button on the access point until the lamp starts flashing.



- Press the Connect button on the printer.



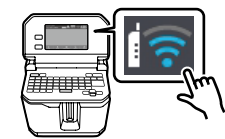
Connecting wirelessly to MP550 printer via SimpleAP mode:

- Push the power button on the MP550.



Connecting wirelessly to MP550 printer via SimpleAP mode (Continued):

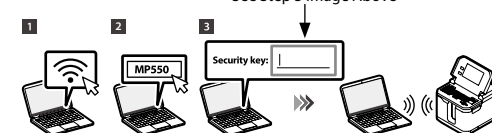
- Push the Wi-Fi icon button on the MP550 LCD touch panel to start the connection process.



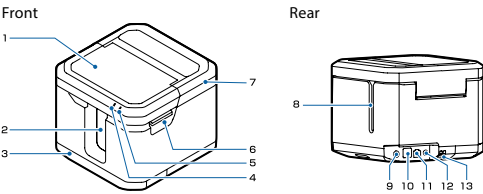
- Push the Wi-Fi icon on the LCD touch panel and select, Print Connection Information, to print the pin code.



- Connect to the printer by clicking MP550 under the Wi-Fi connections and entering the password.



Printer Components and Functions:

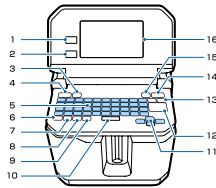


1	LCD cover	Open this cover to operate the touch panel and the keyboard.
2	Tape ejection slot	Printed labels come out through this slot.
3	Rewinder cover	Open this cover to connect a rewinder unit (available as an option) to the printer.
4	LED	Stays on while the printer is powered.
5	LED	Indicates the battery status. Comes on when charging is started, and stays on during charging. Turns off when charging is completed. You can check the battery level on the touch panel. "LCD touch panel / Buttons / Keyboard" on page 10 Blinks if an error such as stop of charging occurs.
6	Top cover lever	Push this lever up to open the cover.
7	Top cover	Open this cover to install or remove a tape cartridge or a battery.
8	Tape insertion slot	When installing a tape cartridge of Bulk label quick kit in the printer, let the tape pass through this slot.
9	AC adapter connector	Connect the cable of the AC adapter.

9

10	USB connector	Connect the included USB cable.
11	Wired LAN connector	Connect a LAN cable. Use a shielded twisted-pair, Category 5 or higher, straight-through Ethernet cable wired for 10BASE-T or 100BASE-TX.
12	Connect button	Press this when connecting the printer to a wireless LAN using WPS.
13	Security cable attachment point	For a commercially available security cable lock. Pass the cable through here.

LCD Touchpanel/Buttons/Keyboard



1	Home button	Lets you display the label type selection screen.
2	Back button	Lets you move back to the previous screen.
3	Menu button	When editing a label image on the display, press this button to access the following menus. • File Save / Open / Delete / Print • Print Settings Cut Settings / Print Density / Drop Stop / Die-Cut Position Adjustment / Half Cut Depth Setting / Half Cut Error Setting (full cut detection) • Settings Basic Settings / Network Settings / Restore Default Settings / Version

10

LCD Touchpanel/Buttons/Keyboard (Continued):

4	Power button	Lets you turn the printer on or off.
5	Character keys	Lets you enter characters and marks.
6	Shift key	Shift key
7	Caps lock key	Caps lock key
8	Function key	Function key Hold down this key and press a dual-purpose key to activate the second function of the dual-purpose key.
9	Accented key	Allows you to type an accented character.
10	Space key	Lets you enter a space.
11	Cursor key	Lets you move a cursor when selecting a menu or setting, or when editing a label.
12	Enter key	Hold down the [Function] key and press this to add a new column.
13	Delete key	Press and hold this key to delete characters and/or symbols until you release the key. Hold down the [Function] key and press this to delete entire text, or delete text and the settings.
14	Print key	Hold down the [Function] key and press this to access the following menus. • Number of Copies • Enlarge Print • Mirror Print
15	Feed button	Lets you feed the tape, or feed and cut the tape.
16	LCD touch panel	Touch the panel to select a menu and change the setting. Swipe the screen to scroll up/down or left/right.

11

Printing from Mobile App

- Panduit Easy-Mark Plus Mobile printing app is available for iOS and Android devices. Visit online app store or www.panduit.com

Easy-Mark Plus Mobile App

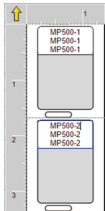
- Images
- Label Series
- Text
- Text Boxes
- Barcodes
- QR Codes
- Save Labels
- Open Easy Mark Plus Desktop files on mobile application
- Savings files to local device and cloud
- Save files on mobile app and open in desktop version of Easy-Mark Plus
- Many Font Sizes



12

Print from Easy-Mark Plus Software

- Connect the MP550 printer to a computer with USB cable or connect wirelessly via Wi-Fi.
- Print from Easy-Mark Plus Labeling Software. Easy-Mark Plus is sold separately and includes MP550 driver.
 - Easy-Mark Plus on disc: EMPLUS-CD
 - Easy-Mark Plus on USB flash drive: EMPLUS-2GO
 - Easy-Mark downloadable version: EMPLUS-DL



13

Additional Support

Visit www.panduit.com

Free Downloads

Path: Support / Download Center / Software
Firmware Printers

- Detailed Operator's Manual
- Replacement Quick Reference Card
- Product Bulletin
- Product Specification and Safety Information
- Latest Printer Firmware

Warranty Registration

Path: Support / Product Registration

Related Products

- MP Label Cassettes
- MP75, MP100, MP200, and MP300 Printers
- Mobile Labeling Apps for Android and iOS
- Easy-Mark Plus Labeling Software

Note: Please refer to the instruction label in cassette compartment for the printer head cleaning.

14

Global Customer Service

- cs@panduit.com
- U.S. and Canada: 800-777-3300
- Europe, Middle East, and Africa: 44.20.8601.7200
- Latin America: 52.33.3777.6000
- Asia Pacific: 65.6305.7575

PANDUIT TECHNICAL SUPPORT

- GA-TECHSUPPORT@PANDUIT.COM
- U.S. and Canada: 1-866-871-4571
- Europe: 31.546.580.452
- Latin America: 52.33.3777.6000
- Asia Pacific: 65.6379.6700

Part Number: MP550-QRC-EN, Rev. 1
DWG Number: 01303ECD

15

16